

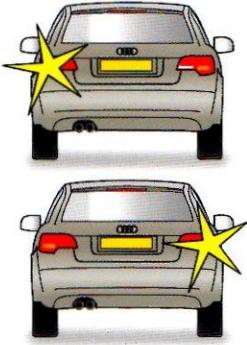
# Use of signals - Mechanical

## Mechanical

- Indicators
- Brake lights
- Reverse lights
- Hazard lights
- Horn
- Flashing headlights
- Road Position

Move onto indicators & non-mechanical signals...

# SIGNALS - Mechanical



Indicators



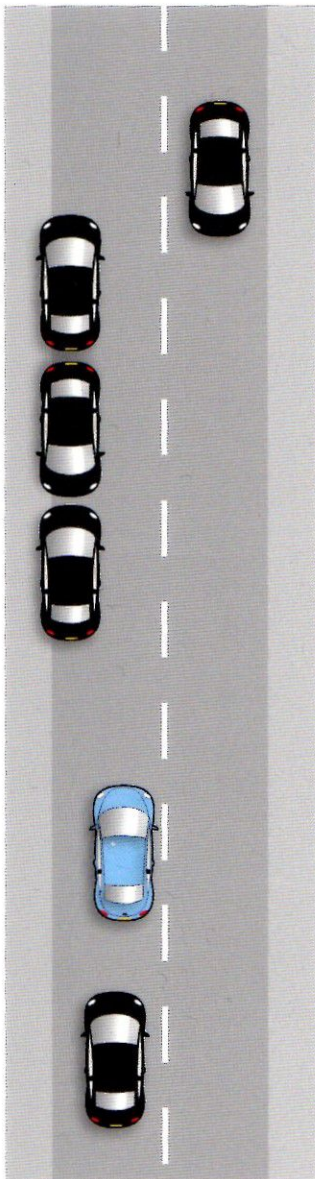
Brake lights



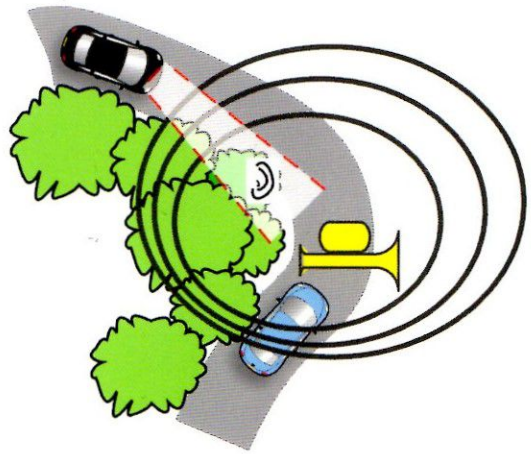
Reverse lights



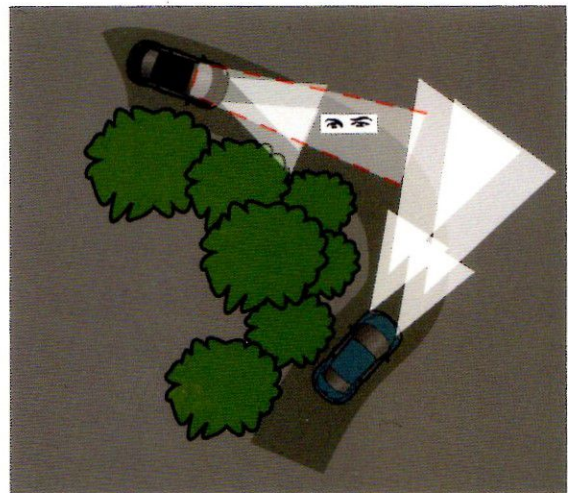
Hazard lights



Position



Horn



Flashing  
Headlights



# Use of signals - Indicators

## Indicators

### *Discuss...*

**Why** we signal

**Why** timing is important

**Unnecessary** signalling

## **Non-Mechanical Arm Signals**

### **Used:**

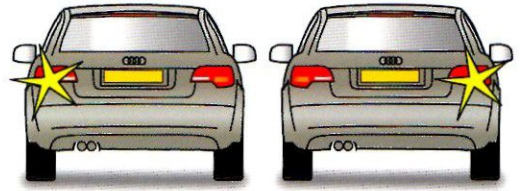
- When direction indicators are not available (e.g. a blown indicator bulb)
- To **reinforce** direction indicator signals and stop lights if necessary
- To understand arm signals if someone else uses them

Pupil to practice as you explain (**arm** out of the window - not just hand!)

Any questions?

Give practical help on the move

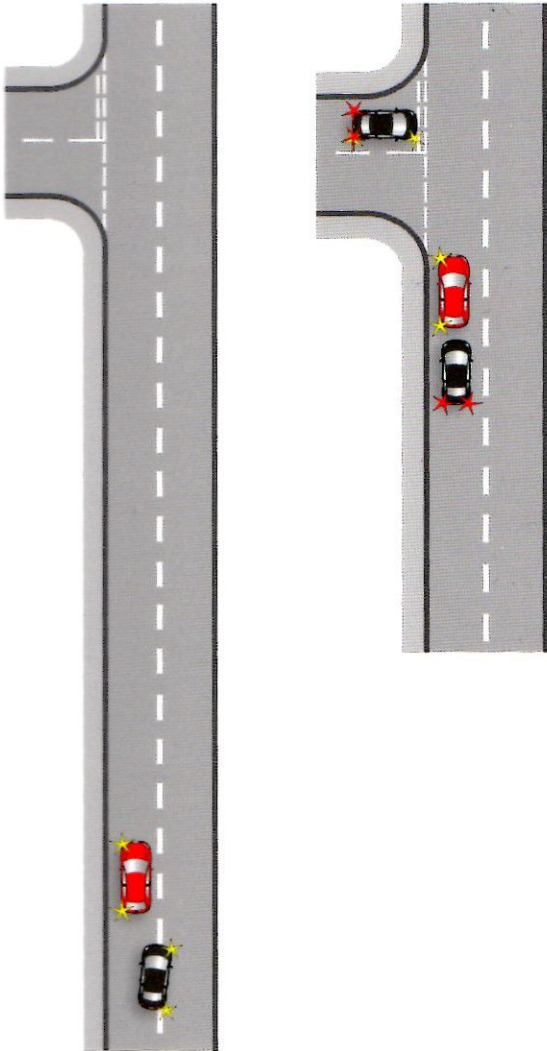
# SIGNALS - Indicators



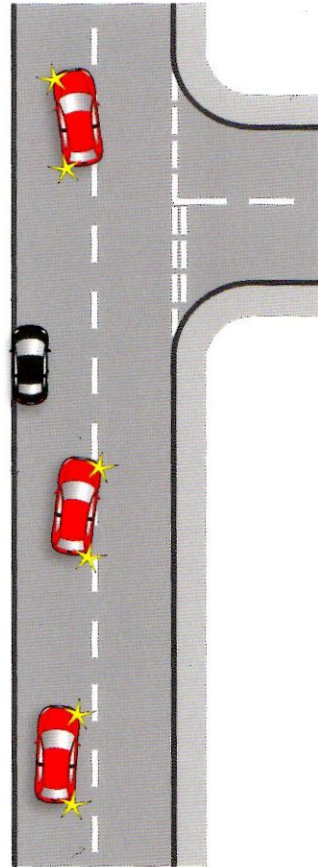
## Timing

Early

Late



## Unnecessary



## Arm

Left

Right

Slow down  
Stop

Right

Left  
(either arm)

Straight  
Ahead



Normally used for persons controlling traffic